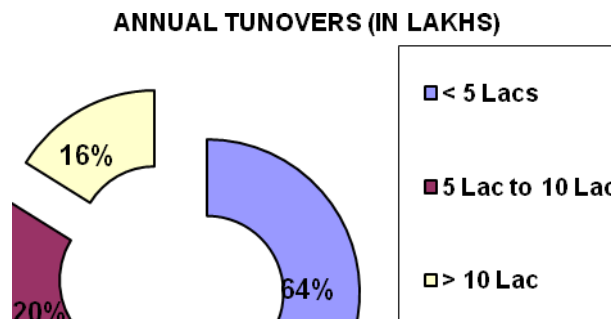


SUMMARY OF FINDINGS

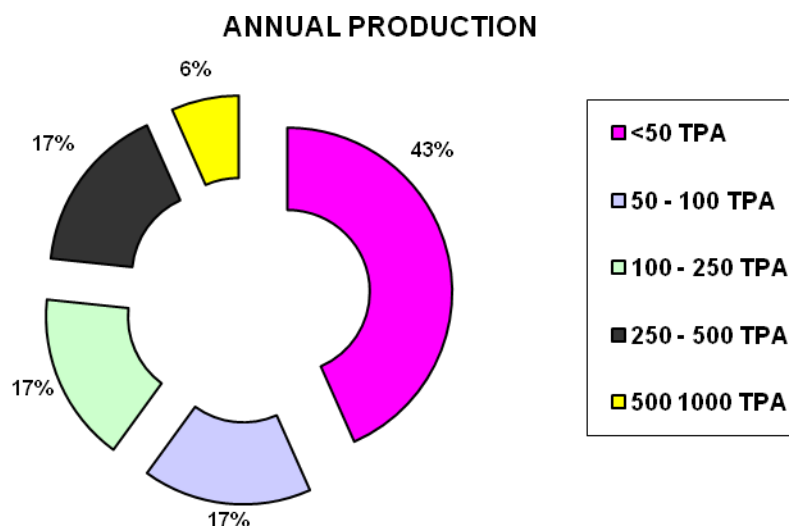
- The coir industry cluster is an 100% labor intensive cluster
- The units are always under severe raw material as well as labour shortage.
- Electricity is the only energy source used by the units in this cluster with daily power break down ranging between 1-2 hours.
- Irregular employment is a major problem in this industry, which is one reason why coir workers are keen to belong to a union. A typical entrepreneur is the small producer who has a unit near the backwaters, with 20 to 30 looms . Such a unit usually functions without registration and employs workers only when raw material is available. Typically, there will be a shed where women do the spinning, while the men prepare the bales from the rope.
- The exporters get to determine the price of coir and coir products. Exporters are crucial players.
- Low costs of production in neighbouring States such as Tamil Nadu and the use of acrylic fibre have depressed the earnings of the small-scale coir entrepreneur. The decline of coconut production in the traditional coir-producing areas has increased the scarcity of coconut husk and fibre and this has made Kerala depend on fibre imports from Tamil Nadu

ANNUAL TURNOVER

Number of companies with turnovers in different ranges as given in index



PRODUCTION

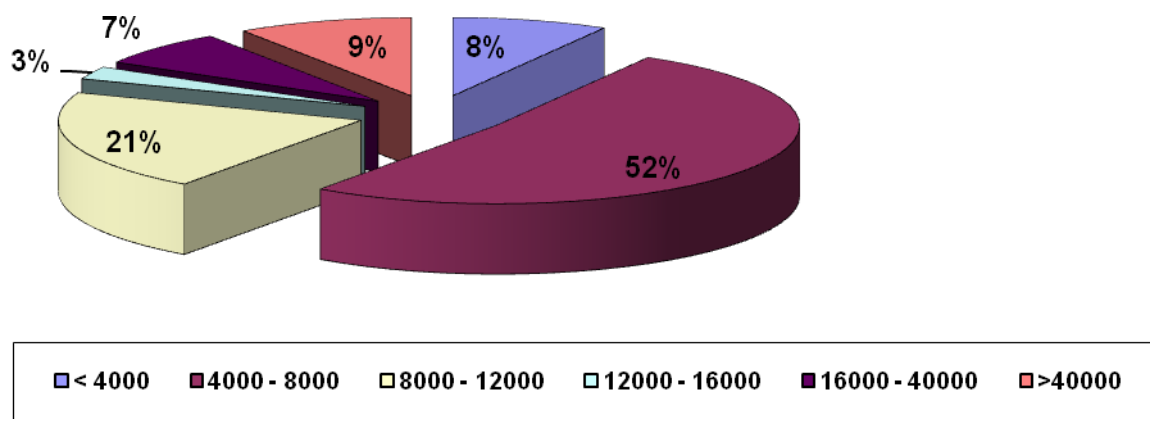


ENERGY REQUIREMENTS

USAGE OF FUEL

Electricity

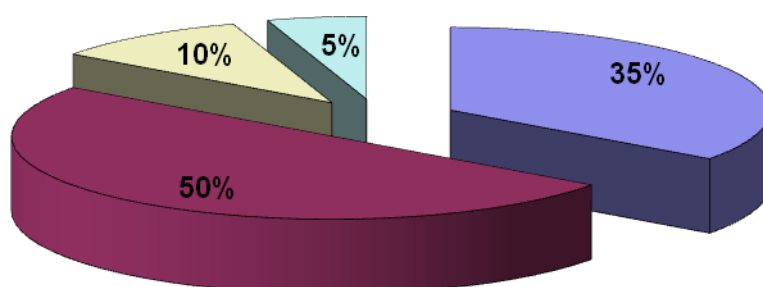
All values are given in units usage per annum



RAW MATERIAL REQUIREMENT

HYDROGEN PEROXIDE

(All values in litres per annum)



■ < 100

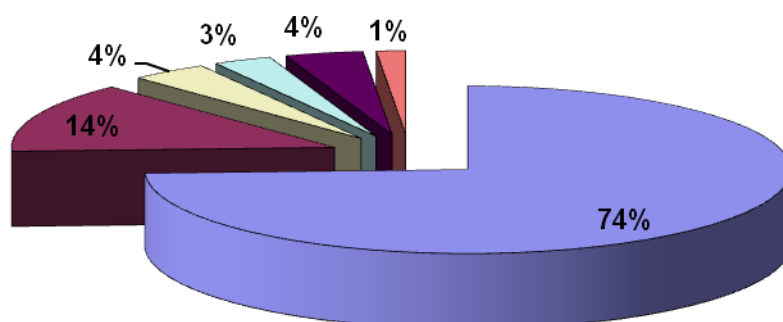
■ 100 - 250

■ 250 - 500

■ > 500

COIR

(All values in tonnes per annum)



■ <25

■ 25 - 50

■ 50 - 100

■ 100 - 250

■ 250 - 500

■ > 500

FIELD OBSERVATIONS

- The Allepy , called as Alappuzha is an coir cluster wherein different coir based products are manufactured for Indigenous as well as exports with major thrust on exports as a number of export houses are located who get the work done through these small scale units on job work basis.
- As per the various industry sources a total of 242 units are spread across Allepy, but as per industry association since the major raw material -coir fiber is scarce in Kerala a number of units are facing shortage of material.
- The units are largely operating in an single shift but of stretched timings of 10 hrs, and there is seasonality i.e. the peak season for the finished products is November to December as the major customers are Foreigners. Majority of the units are not in operation for 2/3/ months during the monsoon season due to raw material problems.
- The major equipment is shearing machine, sewing machine, power loom, in some instances certain units also have an boiler but its in only a couple of units.
- The products manufactured are
 - Coir ropes
 - Coir mats
 - Door mats
 - Car mats
 - Fibre mats
 - Certain consumer products also.
- Certain units also use Jute and manufactured garments,
- The yarn is the most important input material produced from coir fibre which depending upon the end product to be manufactured varies – anjengo yarn is the most superior yarn , the other one is - aratory yarn.
- The manufacturing process is different depending upon the products to be manufactured
 - Coir fiber fed in looms (In some case raw coir which is purchased, debiering is carried out)
 - Spinning the yarn
 - Weaving

- Finishing

- Certain units which are into manufacturing of mats, door mats, car mats etc do the dyeing & bleaching with help of certain dyes, chemicals –hydrogen peroxide is also used. Sheet Forming, ;Latex Spraying, Use of hydraulic Press.
- There is no use of any technology, all are manual process units, and there is no mechanization.
- The raw material is raw coir, coir fiber, dyes, and chemicals.

SERVICE PROVIDERS

Center	Name of equipments	Address
Alleppey	Fibre Cleaning Machine / Traditional Rope Making Unit / Corridor Mat Frame and Press /Semi Automatic Loom	Asok Steel Industries, Mini Industrial Estate,Cherthala - 688 529, Kerala
Alleppey	Defibering machine / Curling machine / Rewinding accessories /Crusher ect	Coirwell Engineering Works ,49-A, Industrial Estate, Udumalai Road, Pollachi.
Alleppey	Defibering machine / Curling machine / Rewinding accessories /Crusher ect	CONES INDIA ENGINEERING WORKS, ICS Mill Building, 85 - Palghat Road, Pollachi.
Alleppey	Motorised Ratt	ALLEPPEY DIOCESAN CHARITABLE SOCIETY AND SOCIAL WELFARE SOCIETY,ALLEPPEY - 688 001. Phone: +91-477-2245053
Alleppey	Shearing Machine	AMRISH ENGINEERING WORKS,IX/260, VCN Road,Thathampally P.O.ALAPPUZHA 658 013, Ph 077 2264696
Alleppey	Pattern Making Machine	D.D. INDUSTRIES, Viyani Nagar, Punnappara, ALAPPUZHA
Alleppey	Defibering machine / Motorized ratt Ect	DOLLAR INDUSTRIAL MACHINES R.S.109/3, Palamuthi Road, Pattukkottai – 614 604 Thanjavur District, Tamil Nadu. Phone : +91-4373-222308 (F)
Alleppey	Defibering machine, crusher, Ect	S.G.Enterprises, #14, N N Road, Tirunelveli-627 004, ph 0462 - 2342055 / 2342665

Besides this 2/3 local associations / are there.. A number of co-operative, SGH are also working in the area.

- Small Scale Coir Goods Producers

The Federation represents the small scale coir manufacturers' associations in the Ambalapuzha and Cherthala taluka of Alappuzha coir cluster having the largest membership in the sector.

- Association of Mats & Matting Co-operative Society

Shri. P.V.Sathyaneshan, President.

- COIRFED

Shri V. Sam Jose

Ph: 0477-2243627

BANKERS

- All the units have some or the other bankers. The major one are
 - SBI
 - Indian
 - Allah bad Bank
 - Federal Bank
 - State Bank of Travancore
- None of the units have taken loan for any capital equipment.
- The respondents were not aware of CGFTI