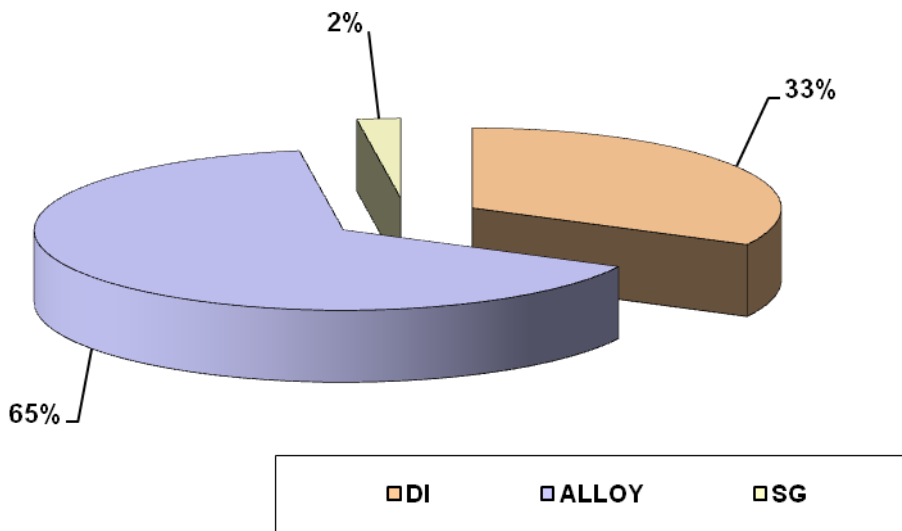


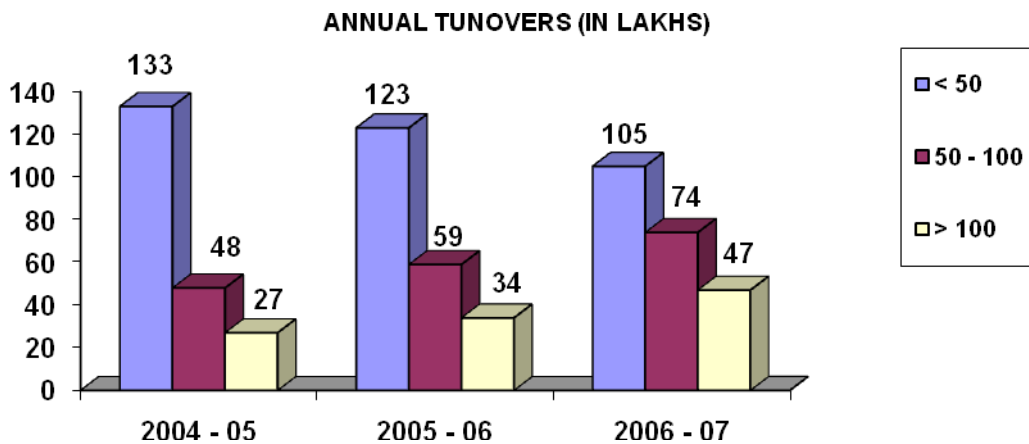
SUMMARY OF FINDINGS

- There are app. 410 small scale units in this cluster and is the largest production base for casting –ferrous as well as non –ferrous
- Overall the units are into in this cluster



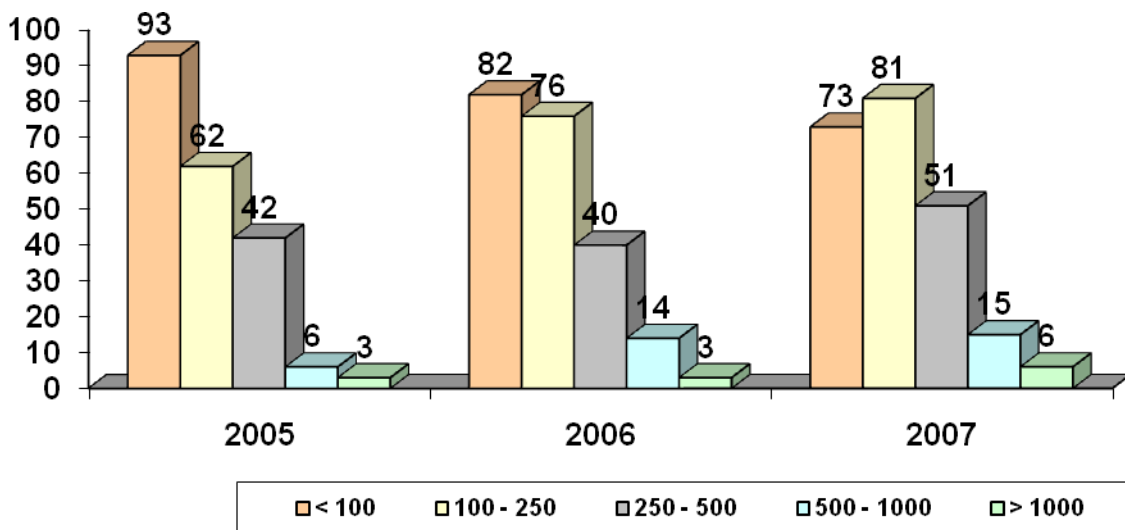
ANNUAL TURNOVER

Number of companies with turnovers in different ranges as given in index



PRODUCTION

All figures are in tonnes per annum



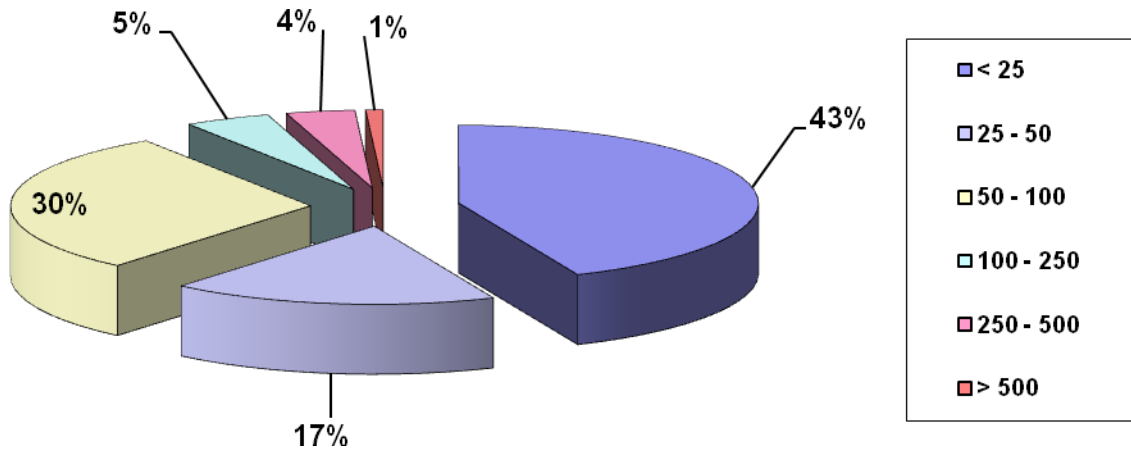
ENERGY REQUIREMENTS

USAGE OF MAJOR FUEL

	QTY	NUMBER OF UNITS USING THE FUEL
ELECTRICITY	<u>CONNECTED LOAD</u>	62
CHINESE COKE/ COKE	6431 TONNES	108
COAL	6856 TONNES	43
FIREWOOD	3789	63

USAGE OF COKE (CHINESE AND OTHER)

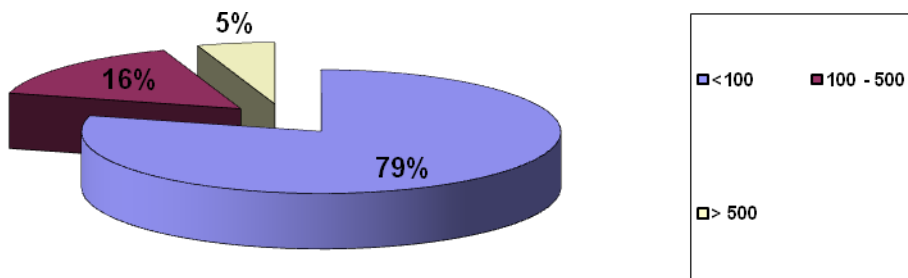
(USAGE OF UNITS IN TONNES)



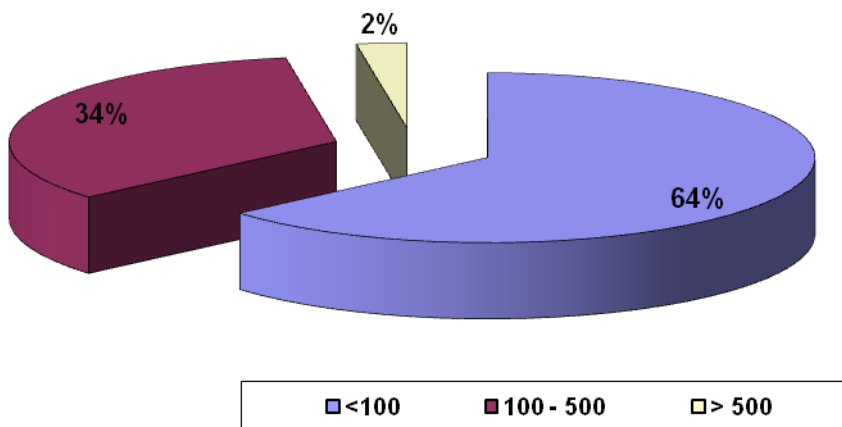
RAW MATERIAL REQUIREMENT

RAW MATERIAL	TOTAL AMOUNT	NUMBER OF UNITS USING
SAND	10759	138
STEEL SCRAP	23662	228
CLAY	2388	37
PIG IRON	16780	72

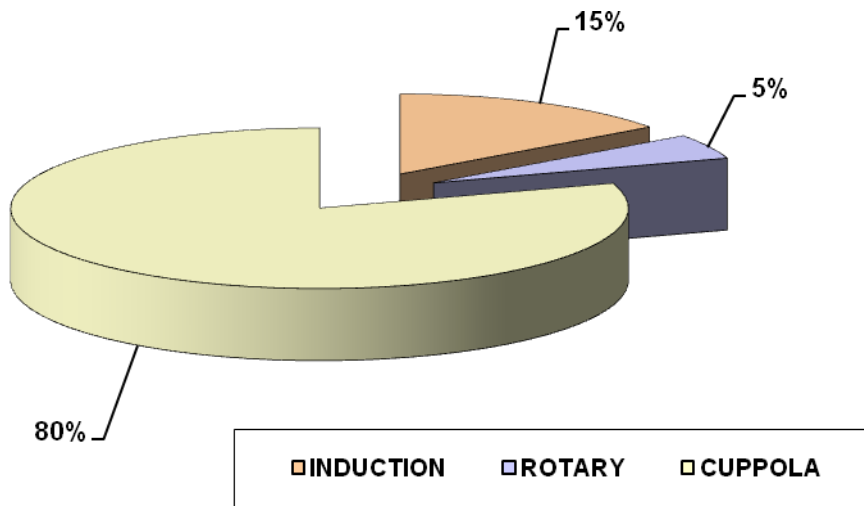
UNITS USING SAND



UNITS USING STEEL SCRAP



TYPES OF FURNACE INSTALED



FIELD OBSERVATIONS

- The entire cluster is spread across
 - Peelamedu
 - Ganapathy
 - Irugur
 - Singanalur
 - Kurichi
 - Arasoor
 - Chettipalayam
- The castings which are manufactured have different application but mainly into
 - Auto spares
 - Motor parts
 - Textile parts
 - Pumps
- Majority of the units are operating in an single shift with extended working hours – 10 hrs.
- The units in operation are in business since last 15 –20 yrs, some have open shop in the new areas in last 2/3 yrs catering mainly to the auto business.
- The type of castings manufactured are SG –220,210, 240,260, in case of Steel its – 4 10,304,306.
- The major raw material is pig iron AND THE MAJOR FUEL IS ELECTRICITY AS WELL AS COAL. With the advent of low ash content Chinese coke, the demand for domestic coke has phased out. The ash content in the Chinese coke is <10 % as compared to Indian coke but the problem is availability of Chinese coke.
- The major constraint for the growth of this cluster is the ever-increasing raw material cost – coke as well as scrap.
- As regards the non –ferrous castings are concerned - pressure die casting and gravity die casting units are there which mainly cater to the aluminum and bronze alloy castings for the hardware, automotive , pump parts, engine components.
- The major equipments are furnace, cupola, molding machine (largely hand molding), sand mixer machine.

- The major issue in this cluster is availability of man power as well as high raw material price.

ENERGY CONSUMED IN THIS CLUSTER

FUEL	QTY	ANNUAL COSUMPTION
ELECTRICITY	168,75000 UNITS/MTH	2025 LAC UNITS
HSD	20190 LT/MTH	2,42,280 LT/MTH
FO	19,255 LT /MTH	2,31,060 LT/MTH
COAL	550TPM	6600TPA
FIRE WOOD	359 TPM	4300 TPA

SERVICE PROVIDERS

NAME OF EQUIPMENTS	NAME OF EQUIPMENT SUPPLIER	ADDRESS 1	ADDRESS 2
Induction Melting Furnaces for Ferrous and Non Ferrous Metal Melting	INDUCTOTHERM INDIA LTD	Ahmedabad Head Quarter & Manufacturing Plant : Address: Bopal, Ahmedabad - 380 058 Gujarat (India) Tel: 91-79-3731961 (8 Lines) Fax: 91-79-3731266, 91-79-3731268	Coimbatore: Sales & Service Centers: 29, GKS Nagar, Pappanickenpalayam, Coimbatore - 641 037 Ph#: (422) 210302 Fax #: (422) 210295
Intensive Sand Mixer / Moulding Machine / Core Sand Mixers Ect	SRI MURUGAN FOUNDRY EQUIPMENT	12/3, Luna Nagar, ABBAS garden, Coimbatore - 641025, Phone:91-422-2400842	
Intensive Sand Mixer / Moulding Machine / Core Sand Mixers Ect	LAKSHMI INDUSTRIES	55-A/1, NAVA INDIA ROAD, GANAPATHY COIMBATORE - 641 006, Ph 0422 2560168	
foundry equipment accessories and foundry equipment spares.	Excell Engineering Equipments	5/320-C, Palanigoundan Pudur, V. S. K. Nagar, K. Vadamadurai, Coimbatore, - 641 007, Phone: +(91)-(422)-2648560/3205338	
blasting machine and shot blasting machine.	Dhanalakshmi Controls & Equipments	9-A, O. H. M. Ganesh Nagar, Vadavalli, Coimbatore, - 641 041, Phone: +(91)-(422)-2549289/2453395	
sand mix mullers moulding machines.	Sree Sakthi Equipments Company	633, Bettathapuram Pudur, Karamadai, Coimbatore, 641 104, Phone: +(91)-(422)-2272165/2273135	
MFRS STD (DME/HASCO) NON STD MOULD HOUSING FOR PLASTICS & PRESSURE DIE CASTING, DIE & PATE DIE SETS	Sarva Mangala Engineers Pvt Ltd	Address 68 SIDCO INDUSTRIAL ESTATE, KURICHI, Coimbatore Pincode 641021 Phone No 0422 - 2672714	

- Coimbatore Tiny & Small Foundry Owners Association (COSMAFAN)
Peelamedu
Coimbatore – 641004
Shri R. Balasunderam

BANKERS

- All the units have some or the other bankers. The major one are
 - ICICI
 - SBI
 - Citibank
 - Indian
 - IOB
 - CBI
 - CANARA

- None of the units have taken loan for any capital equipment, its for CC limits and working capital.

- The respondents were not aware of CGFTI

