

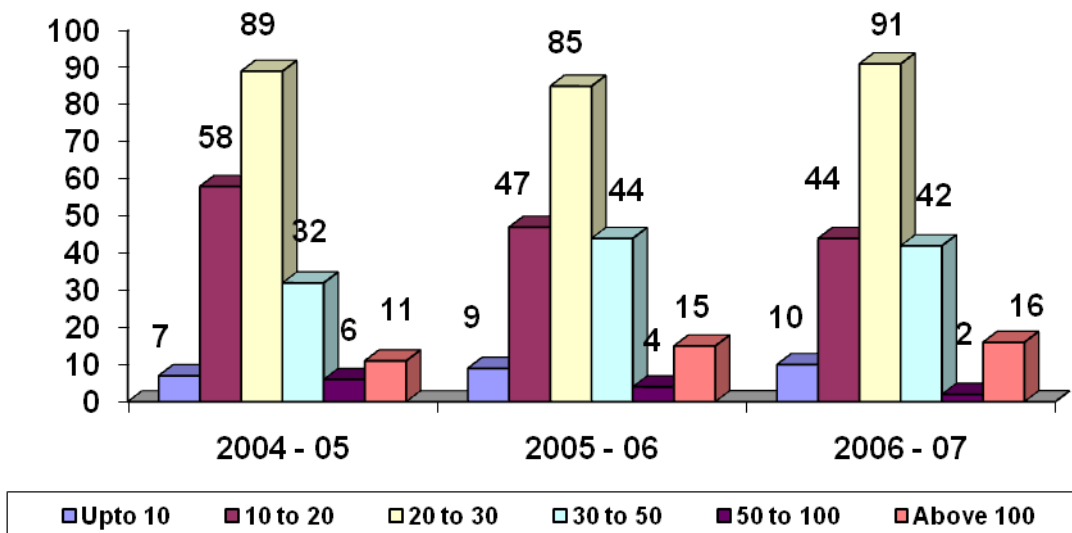
SUMMARY OF FINDINGS

- ✚ The units are well-established ones in operation since 20-25 yrs, some are in operation since 7-10 yrs.
- ✚ The turnover of certain units is as high as Rs. 4 crs whereas for some smaller units is app 15-Rs. 30 lacs.
- ✚ Majority of the units are mechanized and operating in 2 shifts.
- ✚ The major equipment is rubber Sheller & polisher (whitener) and motors to run them.
- ✚ Production ranges from 5 to 45 tpa.
- ✚ This business is also seasonal in nature and in case there is no electricity – power break down, no units have any power back up system
- ✚ The other major cause of concern if lack of labour and raw material.

ANNUAL TURNOVER

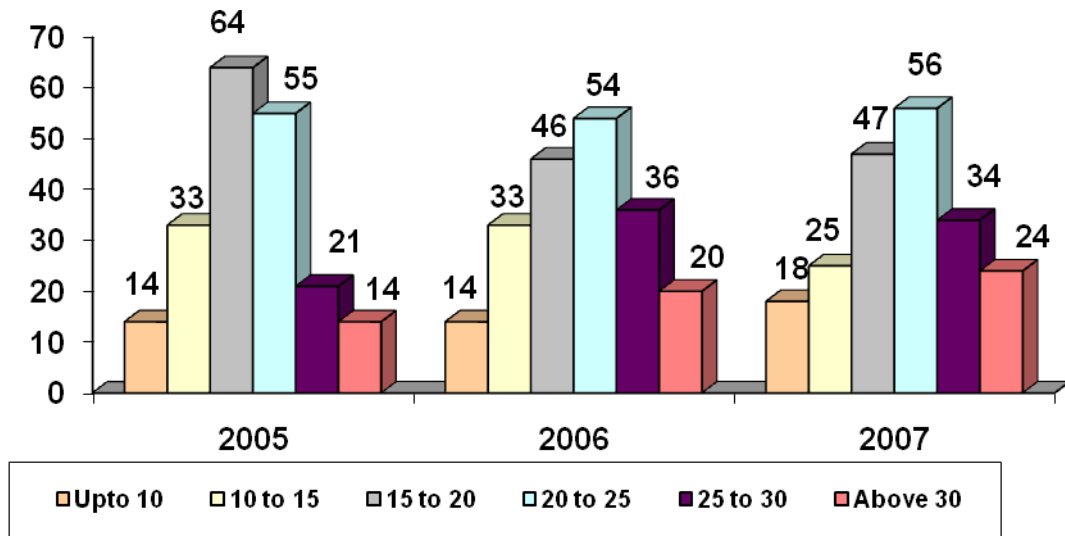
Number of companies with turnovers in different ranges as given in index

ANNUAL TURNOVER (IN LAKHS)



PRODUCTION

(In Tones per annum)



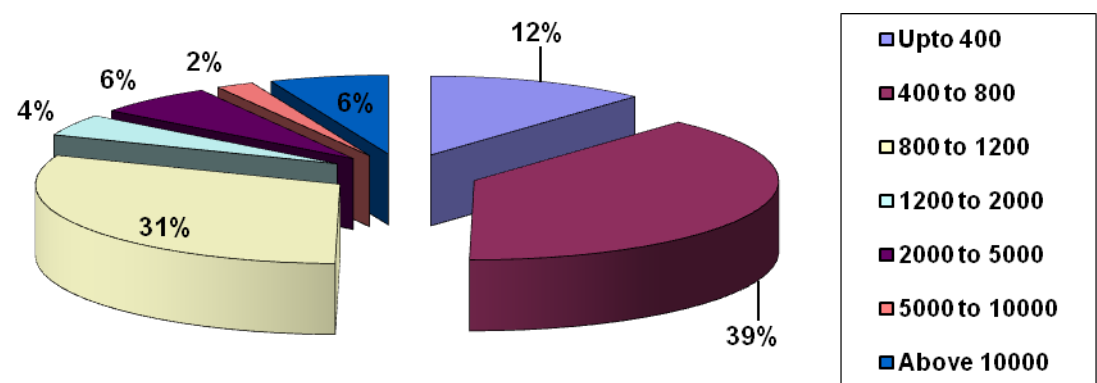
ENERGY REQUIREMENTS

| FUEL | QTY CONSUMED PER ANNUM | NUMBER OF UNITS USING THE FUEL |
|-------------|------------------------|--------------------------------|
| ELECTRICITY | 3502170 Units | 204 |

RAW MATERIAL REQUIREMENT

| RAW MATERIAL | QTY CONSUMED PER ANNUM | NUMBER OF UNITS USING |
|------------------|------------------------|-----------------------|
| RICE (Raw Paddy) | 434052 Tonnes | 204 |

UNITS USING RICE (Raw Paddy)
(USAGE IN TONNES PER ANNUM)



FIELD OBSERVATIONS

- The entire district wherein the rice mills were located were spread across Ganjam, Behrampur, Khusabadi, Konkarda, Gosaninuagaon,
- A total of app. 231 units were listed.
- The major equipment used by the rice mills in this cluster was rubber sheller & colour sorter
- The technology is mainly used for rice fineness and rice whitening, the technology is sourced from the following
 - Flour Tech, Faridabad
 - Mill Tech, Bangalore / Pune, 080-27831128
 - NIRDOL, Vijaywada
- Majority of the units in operation are since last 25-30 yrs and were operating for 2 shifts.
- Some of the units were expanding their capacity by adding a new plant in the same premises.
- The equipments used in the rice-milling cluster were boiler and electric motors in the range of 25 to 50 hp. Kirlosar, Crompton and GEC were the major brands. In case of boiler, Thermax was the only brand used.
- The major findings were that none of the units were having an DG set or an alternate source of power, in case there was a power cut, which was a daily routine the unit used to remain idle.
- The production in this cluster i.e. operation of the units were seasonal, 90% of the units operated 2 shifts from February to June and from July to Nov -1 shift.
- The other major cause of worry as per the local association was labor and availability of raw material.
- The entire produce of this cluster was being sold to FCI.
- App. 7% of the units used some technology i.e. cone separator, whitener as it fetched them more price per kg.
- The entire process was
 - Raw material was boiled
 - Husking by rubber Sheller

- Cone Separator /Polisher
- Fine polished rice.
- The raw material was supplied from local traders-75% and farmers –25%.

SERVICE PROVIDERS

- The equipment suppliers were
 - Venkateshwar Engg Works, Mr. Prem Bhadhur , Vijaywada
 - Ph: 9440930103
 - Laxmi Mill Stores, Vijaywada, 9848125020
 - Annapurna Engg Works, Vijaywada 0816-2842771/2843876
 - Suri Engg & Foundry Works, Ludhiana
 - Guru Nanak Engg & Foundry Works,
Amritsar.
Ph: 0183-2583542

- The local experts which operated in the cluster were
 - Santosh Maharana, Behrampur, Ganjam. Ph: 9937187761
 - Gangadhar Maharana, Ganjam
 - Kela Maharana, Mashiakhali, Ganjam
 - Muralidharan Acharya, Narsenpeta.

- The local fabricators were
 - Bharati Mill Store, Giri Market Complex, Hanuman Bazar,
Behrampur
 - Bimala Mill Store, Giri Market, Hanuman Bazar, Behrampur
 - Utkal Mill Store, Hanuman Bazar, Behrampur
Ph: 0680-2203646

✚ The only association operating in this cluster

Shri Purna Ch. Sahoo , President

Janta Rice Mill

Behrampur.

BANKERS

- All the units have some or the other bankers. The major one are
 - Andhra
 - SBI
 - Indian
 - BO
- None of the units have taken loan for any capital equipment, its for CC limits and working capital.
- The respondents were not aware of CGFTI

RICE MILL



RUBBER SHELLER

