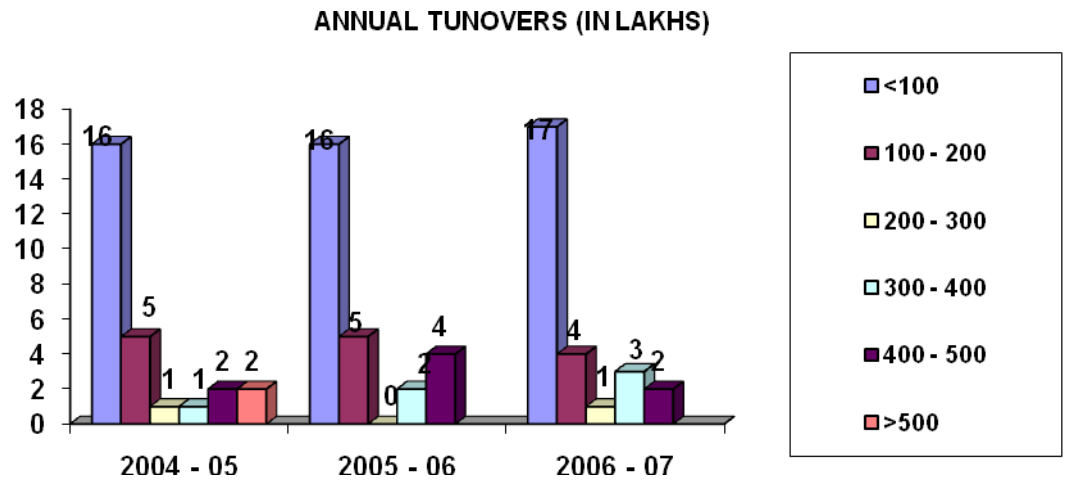


## SUMMARY OF FINDINGS

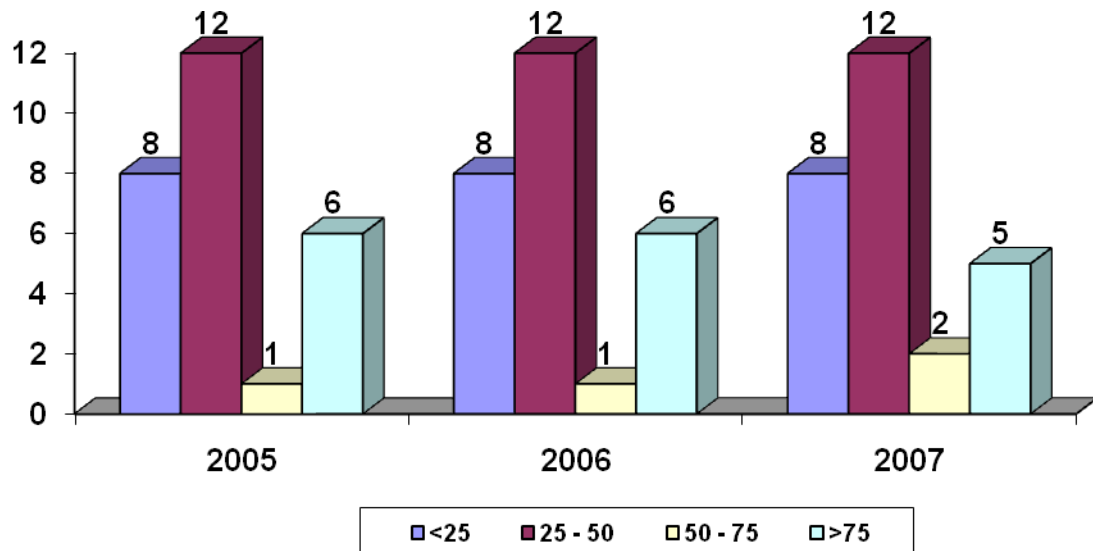
### ANNUAL TURNOVER

Number of companies with turnovers in different ranges as given in index. All values are in Lakhs



### PRODUCTION

All production values are given in lakh pieces per annum

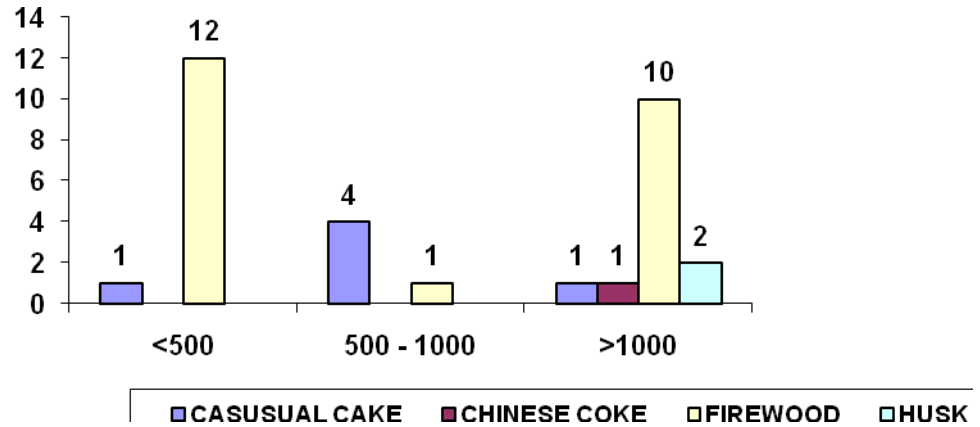


## ENERGY REQUIREMENTS

### USAGE OF FUEL

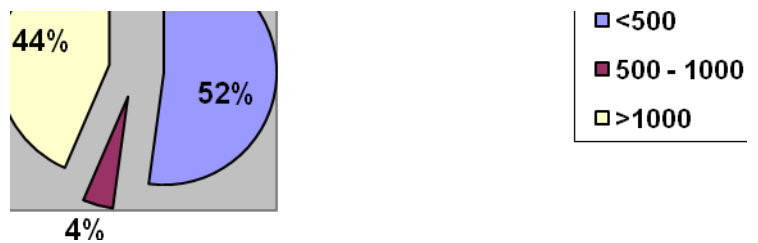
#### NUMBER OF UNITS USING DIFFERENT TYPES OF FUEL

(USAGE AMOUNT IN TONNES PER ANNUM)



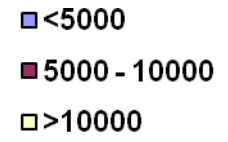
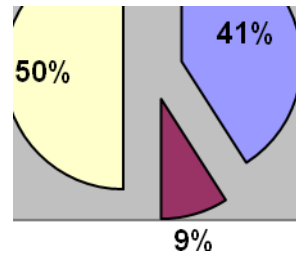
### FIREWOOD

VALUES ARE IN TONNES PER ANNUM



# RAW MATERIAL REQUIREMENT

VALUES IN TONNES PER ANNUM



## FIELD OBSERVATIONS

- This cluster is of roof tiles spread across Mangalore, Udipi, North Kerala
- The cluster in Mangalore consists of app 43 units, hardly 25 are in working condition and slowly shutting shop.
- Since this is a very low end product and its an hand made product this industry is recognized as an cottage industry
- Drying is the most crucial step for manufacturing and secondly clay is the most important ingredient.
- Though to help the local units and R& D center was opened with foreign funds at Mangalore in 1992 for the Roof tile Industry but its lying idle, no activities are taking place neither nay help is given to the units
- All the units are 30-40 yrs old and running in an single shift and always under scarcity of labor.
- The other issue is scarcity of clay.
- The manufacturing process for roof tiles is
  - The clay is mixed with water & mixed in the mixer the mixer is attached with motor of 75 KVA which mixes the clay & water thoroughly as per load, a mixer has an capacity of 20kg clay. If a mixer runs for 8 hrs it can produce around 3000-7000 tiles per day maximum.
  - Pug mill - it is used for extra powdering the clay for extra fine finish. Inside the pug mill there are 2 rollers attached which rolls the clay & crush the minute stones in the clay. The motors are attached from 3HP to 20 HP. The pug mill can take a load of 20 kg clay (Capacity) maximum.
  - Wooden racks- Once the manufacturing process is over the tiles are kept in the wooden racks for drying purpose capacity varies from 50- 70 till 2.5 lakhs tiles at a time it also depends up on the size of wooden racks & kept for one week in the rack for drying that is called as natural drying.

- Next process is these tiles are kept in Kilon ( Chambers) that is the room type build with bricks which is called as bricks chamber in which they will be heating it using husk/casual cake ( casual cake is the homogeneous mixture of husk & oil which is solid in state) in the chamber the tiles are kept for drying 24 hrs .
- Some of the industries are using grinders instead of pug mill

**Energy consumed in the Cluster**

| <u>FUEL</u> | <u>QTY</u> |
|-------------|------------|
| FIRE WOOD   | 46000 TPA  |
| CASUAL CAKE | 3500TPA    |

(casual cake is the homogeneous mixture of husk & oil )

## **SERVICE PROVIDERS**

- The local suppliers were

| <b>Name</b>                           | <b>Address</b>                                | <b>Contact nos</b> |
|---------------------------------------|---|--------------------|
| D' Silva Enterprises                  | KS Rao road Mangalore-1                       | 0824-2409198       |
| Hindustan Sales corporation           | M.G.Road Kodial Bail Mangalore-3              | 0824-24926653      |
| Alankar Boilers                       | #275, Baikambady Industrial Area Mangalore-11 | 0824-2414291       |
| Anil Industries                       | Jai hind building Hampankatta Mangalore-1     | 2414291            |
| Spectrum Industries                   | Yeyyadi industrial Area Mangalore             | 0824-2221018       |
| St.Josephs Asylum Industrial Workshop | Jeppu Mangalore-6                             | 0824-2433133       |
| Sri ganesh Winders                    | NJ arcade Lady hill Mangalore                 | 0824-2453471       |
| Premier traders                       | Shrikrishna prasad complex Lalbagh Mangalore  | 0824-2458599       |
| Seethadevu services                   | Baikambady industrial area Mangalore          | 0824-2400282       |
| Amardeep Enginnering                  | Industrial area Yeyyadi Mangalore             | 0824-22717781      |
| Karavalli Switch gears                | Baikambady industrial area Mangalore          | 0824-2400152       |

- The fabricators operating in this cluster were

| <b>Name</b>                    | <b>Address</b>                              | <b>Contact nos</b> |
|--------------------------------|---|--------------------|
| Elite Engineering works        | Baikampady industrial Area Mangalore        | 0824-2407870       |
| Fabrotech Engineers            | #139/D industrial area Mangalore            | 0824-2400088       |
| Good will Engineering Works    | NH 7 Udupi                                  | 0824-2551380       |
| Kanara Engineers               | B-103 industrial Area Baikampady Mangalore  | 0824-2407464       |
| MR Engineering works           | Ashok Nagar Kottara Chowk Mangalore         | 0824-2458808       |
| Mariam Engineering             | Ambika road Ullal Manglore                  | 0824-2466602       |
| Maruthi Enginnering Industries | Azizuddin road Bunder Manglore-1            | 0824-2420015       |
| St Josephs Engineering         | Jeppu Mangalore-6                           | 0824-2433133       |
| Nagaraj Industries             | 185-A, Baikambady industrial Area mangalore | 0824-240365        |
| Sai Engineers                  | Near Urva store Mangalore-5                 | 0824-2456686       |
| Sri Vinayaka Engineering works | Kudroli Mangalore-3                         | 0824-2494585       |
| Vishwas Engineering works      | #D 3, Udupi Manipal                         | 0820-2575250       |
| Vijayalakshmi work shop        | Pandubettu Malpe road Udupi                 | 0820-2573383       |

- District Industries Centre  
Industrial Area Yeyyadi  
Mangalore-575008  
Mr.S.G.Hegde (Joint director)  
Ph.0824-2212494.
  
  - The district Small industries Association  
Industrial Area Yeyyadi  
Mangalore-575008  
Mr.Gopinath Mallya (President)  
0824-2211984  
Mobile- 9845284906.
  
  - District Small scale industries Association  
Plot # 36/C, Shivalli Industrial Area Alevoor Road  
Manipal- 576104  
0820-2575544  
Mr.B.Shreedhar Shenova
- 
- Fire wood they are getting it from local brokers they in turn get it from forests. Not ready to disclose phone no of brokers since they are getting it un officially.
  
  - **Raw material** - They are getting clay from the Mangalore clay ground the contact detail is Mr.Shreedar - 9902196089. The person gets the land on lease for contract basis & they dig clay from this land & supply to different manufacturers.

## **BANKERS**

- All the units have some or the other bankers. The major one are
  - Syndicate Bank
  - Karnataka Bank
  - Canara Bank
  - Vijaya Bank
- None of the units have taken loan for any capital equipment, its for CC limits and working capital.
- The respondents were not aware of CGFTI