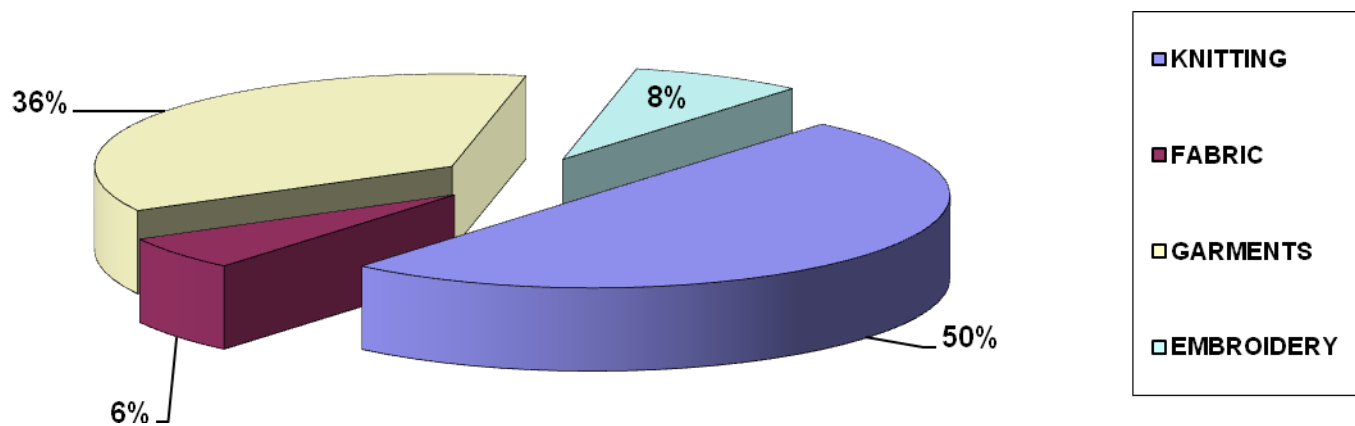


SUMMARY OF FINDINGS

- This cluster is dominated by units in the textile segment, which consists of – knitting, garment manufacturing, fabric, embroidery, and dyeing, bleaching units. It is largely dominated by export houses and is spread in lanes & by lanes of the town
- We have covered units in different categories but not covered dyeing & bleaching units.

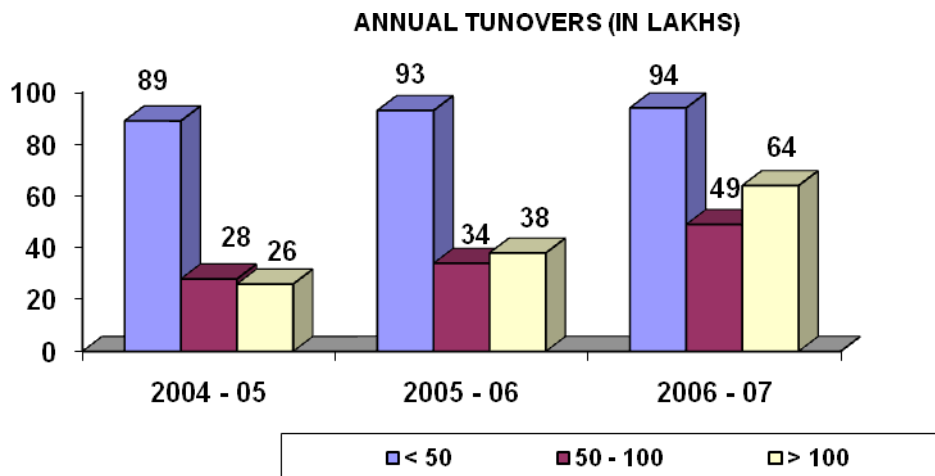
COVERAGE BY TYPE

Number of units

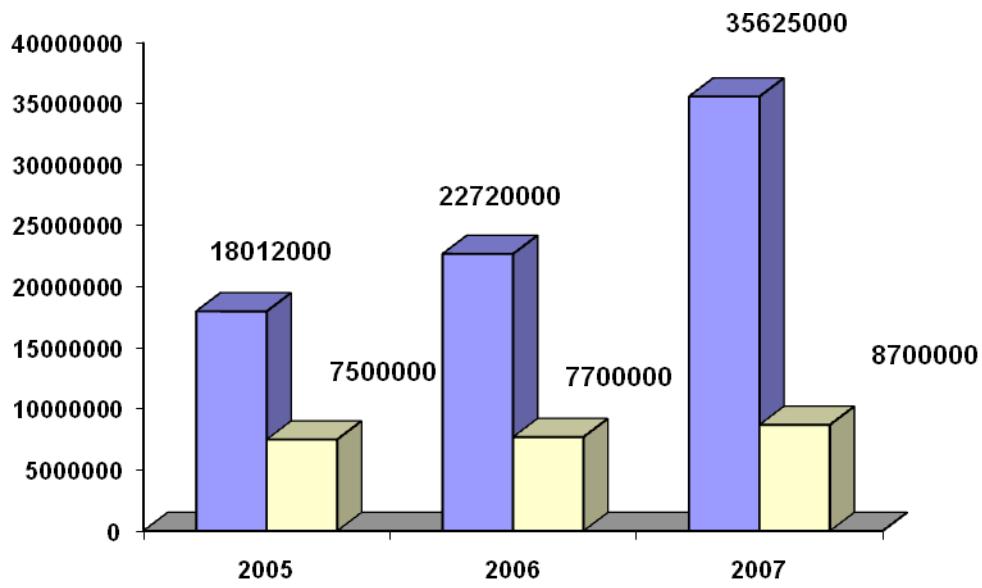


ANNUAL TURNOVER

Number of companies with turnovers in different ranges as given in index



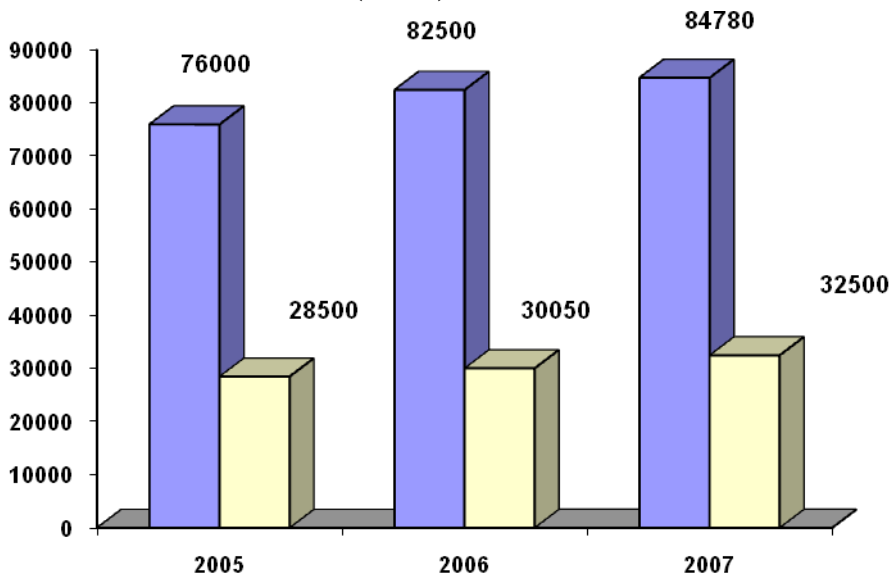
PRODUCTION (IN NUMBER OF PCS)



■ Embroidery (number of pieces)

■ Garments

PRODUCTION (TPA)



■ Fabric

■ Knitting

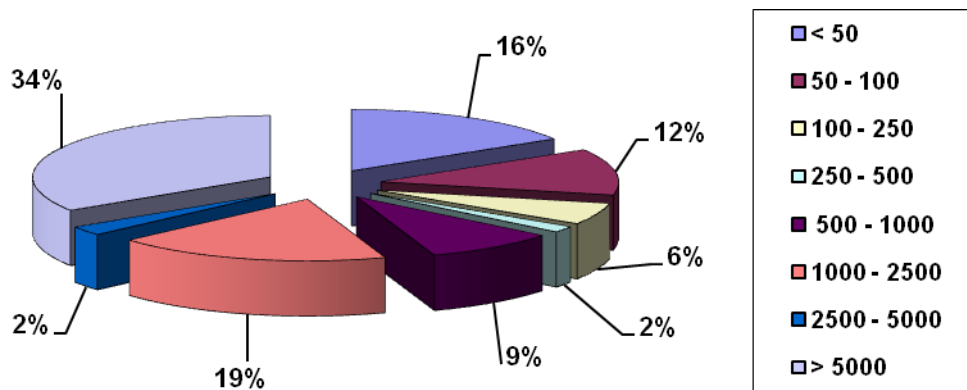
ENERGY REQUIREMENTS

USAGE OF FUEL

	QTY	NUMBER OF UNITS USING THE FUEL
HSD	1167365 litres per annum	123
LDO	125 litres	2
ELECTRICITY		209
CHINESE COKE	60 tonnes	3
COAL	370 tonnes	3
DIESEL	360 tonnes	1

USAGE OF HIGH SPEED DIESEL

(USAGE OF UNITS IN LITRES)



RAW MATERIAL REQUIREMENT

MATERIAL	QUANTITY IN TONNES
THREAD	58245
FABRIC	301933
YARN	146050

FIELD OBSERVATIONS

- The textile cluster at Tirupur is spread across the town and there are as many as 2000 plus units large and small engaged in some or the other business of textiles.
- It is the largest textile cluster consisting of 100% export oriented units
- The units run in an single shift, certain units which are having direct link with the export houses run in 2/3 shifts.
- The units in business are since last 10 -12 years, some are in business since 4-5 years
- There is an acute power shortage, daily cuts of 30 -45 min for 2/3 times in a day. Majority of the fabric manufacturing units – grey fabric wherein looms are operating do not have an power back up system, certain knitting units have power back up systems since they are associated with export house.
- The units are mainly into knitting – T shirt manufacturing, Hosiery. Besides this with export business increasing number of embroidery – computer aided embroidery have also started coming up. Currently there are over 250 embroidery units in this cluster.
- The major equipments are looms, sewing machines operated by motors as well as computed aided embroidery.
- The raw material is dyed fabric, yarn, thread.
- Electricity is the major energy source, HSD is used for power back up.
- Labour is the major issue and as majority of the units are on job work basis i.e. per piece cost is given sourcing of labor is a major problem.

TOTAL ENERGY REQUIREMENT IN THIS CLUSTER

FUEL	QTY	ANNUAL REQUIREMENT
ELECTRICITY	125 L UNITS/MTH	1250 L UNITS
HSD	11.7 LAC LTS/MTH	117 LAC LTS

SERVICE PROVIDERS

Name of Equipments	Name of Equipment Supplier	Address
Sewing Machine	Industrial Sewing Systems	Address SHOP NO 3/4/5, 5/3, N P COMPLEX, AVENUE ROAD, Tirupur ,Pincode 641602 ,Phone No 04124 - 2241102
JUKI, NEW & SECONDHAND M/C`S IRONING & FINISHING M/C`S SPARES-SEWING AND IRONING	Taiwan Industrial Sewing Machine Company	Address 450, P N ROAD, K K K COMPLEX, MILLER BUS STOP, Tirupur,Pincode 641602 ,Phone No 04124 - 5544664
PIECE END JOINING MACHINES, CLOTH CUTTERS & THREADS	Mehala Sales Corporation	Address 491, AVENUE RAOD,Tirupur ,Pincode 641602,Phone No 04124 - 2240945
JUKI, NEW & SECONDHAND M/C`S IRONING & FINISHING M/C`S SPARES-SEWING AND IRONING	Shamruthi Syndicate	Address 28/42, RAM NAGAR, 1ST STREET, Tirupur ,Pincode 641602,Phone No 04124 - 2204142
PIECE END JOINING MACHINES, CLOTH CUTTERS & THREADS	F H Turel & Co	Address 312, P N ROAD , Tirupur ,Pincode 641602,Address 312, P N ROAD , Tirupur ,Pincode 641602
Sewing Machine	YAMATO SINGAPORE PTE. LTD./INDIA LIAISON OFFICE,TIRUPUR MAIN BRANCH	45, RAMRAJ NAGAR, 80 FEET SCHEME ROAD, GANDHI NAGAR, TIRUPUR 641603 , Ph :0421-4333701
Embroidery Machine	Xinyu Orange / Orange Machine	320-A, Sai muthu Plaza, Avinashi Road, Tirupur,641 602, Ph : 0421-4333603
Embroidery Machine	Damei / Mahala Machines India Ltd,	36, Harvey Road, Tirupur, 641 602 , Ph :0421 22 03180
Embroidery Machine	Genesis Apparel Technics	39, P S S Nagar, Devangapuram, Tirupur, 641 602, Ph 0421 22 31 505

BANKERS

- All the units have some or the other bankers. The major one are
 - Indian
 - BOB
 - CANARA
 - ICICI
 - SBI
 - VIJAYA
 - KARNATAKA
- Numbers of units have taken loan for sewing machines. They have high CC limits as working capital requirement is high since the units are on job work.
- The respondents were not aware of CGFTI